

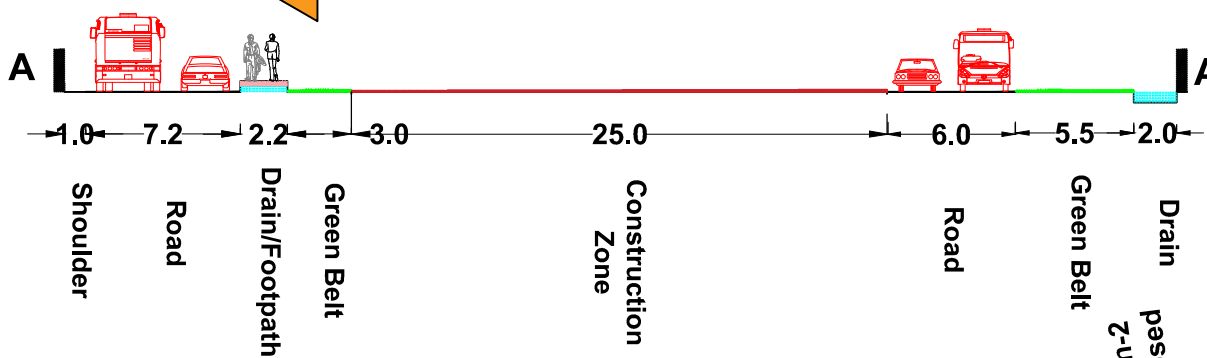
KEY PLAN

DSC ROAD

NOIDA EXPRESSWAY

SECTOR 47

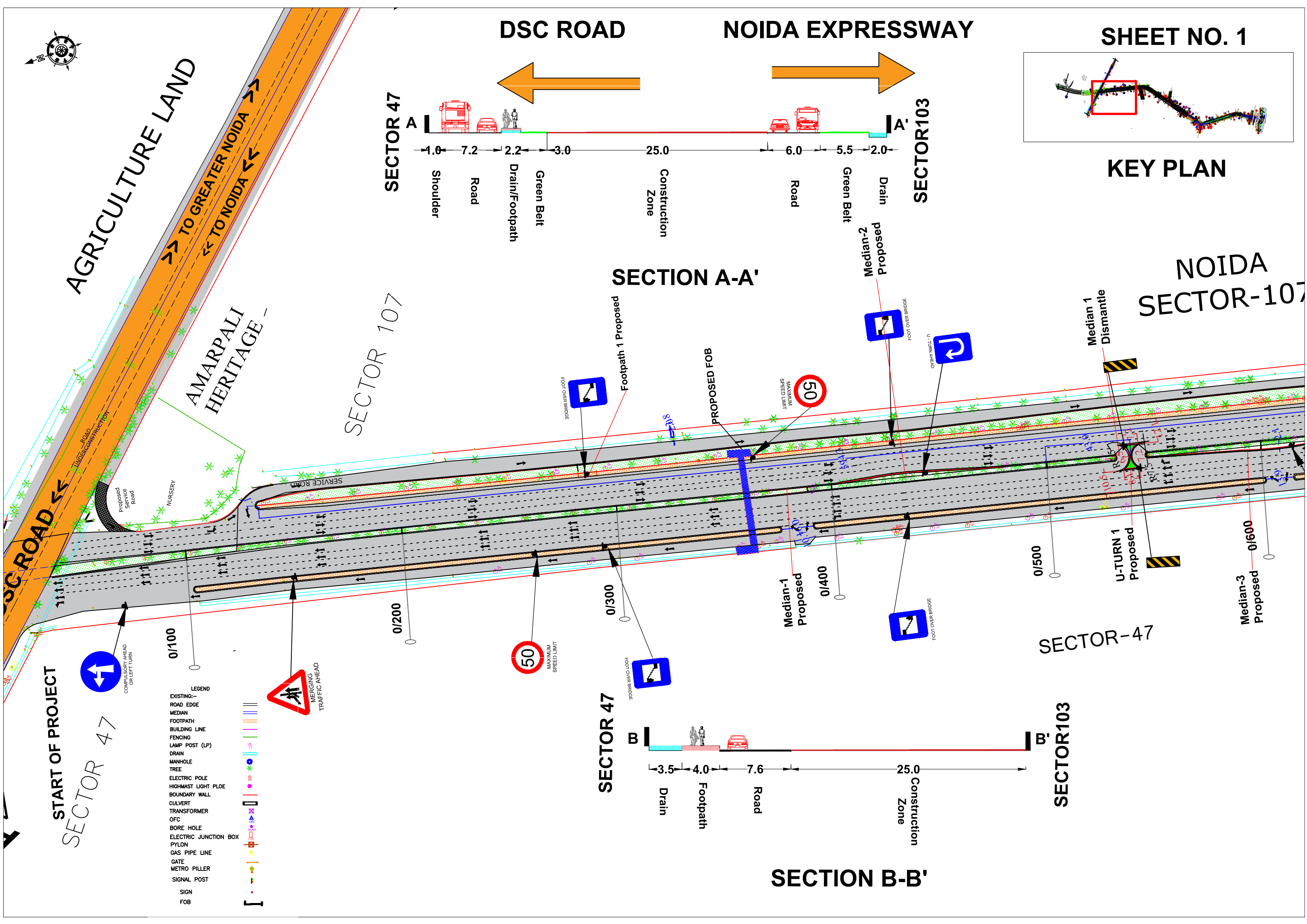
SECTOR 103



SECTION A-A'

SECTOR 107

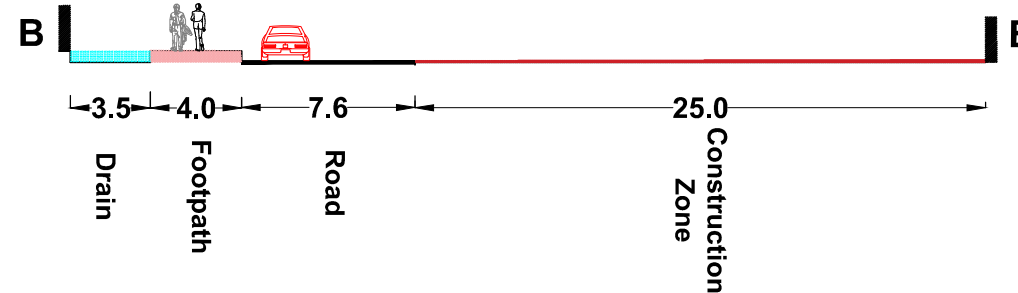
NOIDA SECTOR-107



SECTOR 47

SECTOR 103

SECTION B-B'



- LEGEND
- EXISTING:--
  - ROAD EDGE
  - MEDIAN
  - FOOTPATH
  - BUILDING LINE
  - FENCING LINE
  - LAMP POST (LP)
  - DRAIN
  - MANHOLE
  - TREE
  - ELECTRIC POLE
  - HIGHMAST LIGHT PLOE
  - BOUNDARY WALL
  - CULVERT
  - TRANSFORMER
  - OFC
  - BORE HOLE
  - ELECTRIC JUNCTION BOX
  - PYLON
  - GAS PIPE LINE
  - GATE
  - METRO PILLER
  - SIGNAL POST
  - SIGN
  - FOB

START OF PROJECT

SECTOR 47



COMPULSORY AHEAD OR LEFT TURN



MERGING TRAFFIC AHEAD